

Decanter System

WDR Series



- Widely used in SBR Wastewater Treatment Process
- Capable of continuous or intermittent discharge of the SBR supernatant
- Suitable for Municipal sewerage treatment or Large-scale thickener
- Consists of driving mechanism , water decanting device and water draining system
- Operated by manual, auto and remote modes; smartly controlled via frequency variable drive & PLC
- Fitted with scum guards to ensure exclusion of surface scum and other floating materials
- Lower power consumption, efficient and excellent rotational and sealing effect
- Simple operation, low operating cost, safe and reliable



Rotary Type Decanter in Operation

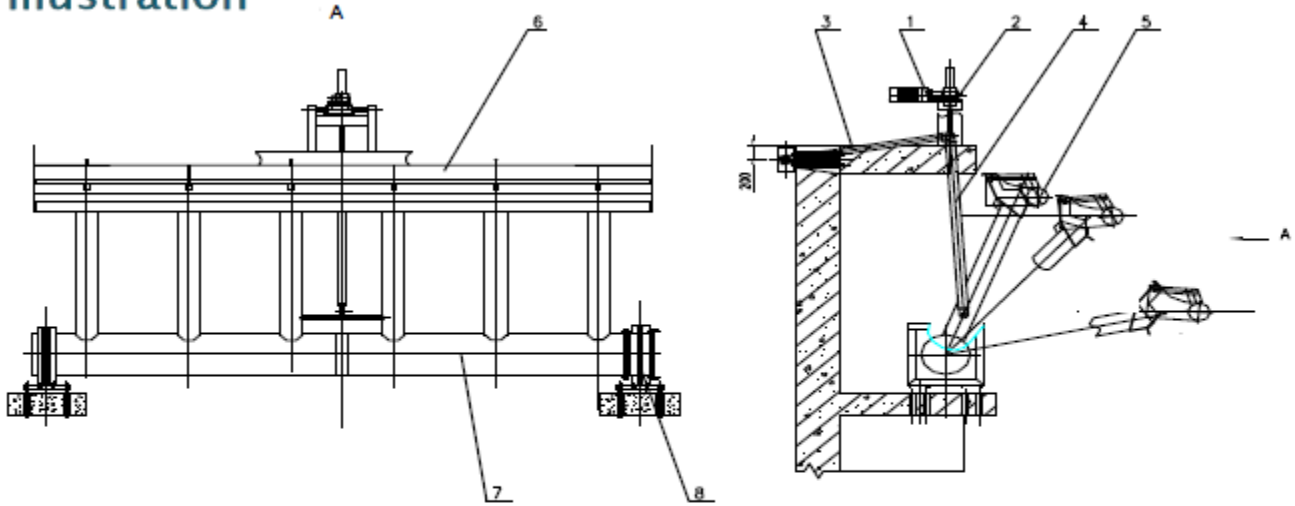
Decants from the top down withdrawing the uppermost clear water from the basin

Prevents disruption of the settling solid

Removes effluent from inches below water surface level and excludes scum & other floatables



Illustration



- 1. Driving Device
- 3. Center Connecting Rod
- 5. Decanter Weir
- 7. Main Pipe

- 2. Lifting Mechanism
- 4. Connecting Rod
- 6. Discharge Weir
- 8. Rotating Bush



Factory Preassembly & Dry-run Test

Technical Parameters*

Model	Decanting Capacity (m ³ /h)	Decanting Depth (m)	Power (kW)
WDR-II-100 ~ 300	100 ~ 300	1 ~ 1.8	0.37
WDR-II-400 ~ 800	400 ~ 800		0.55
WDR-II-900 ~ 1000	900~1000		0.75
WDR-II-1100 ~ 2500	1100~2500		1.1

*For other decanting depths, please contact our sales personnel

13-15 Aylesbury Street
Botany, 2019, Australia

Tel.: +61 (2) 9695 1911
Fax: +61 (2) 9695 1933

www.vor-env.com
enquiries@vor-env.com