

Offered in Australia and New Zealand by:

VoR ENVIRONMENTAL

13-15 Aylesbury Street, Botany NSW 2019 Australia
(t): +61 (02) 9695 1911 www.vor-env.com



**FSM Frankenberger
GmbH & Co. KG**

Equipment for Water
and Waste Water
Inlet Works



Multi Rake
Bar Screen



FSM Frankenberger GmbH & Co. KG
Vor dem Hohen Stein 1 · D-35415 Pohlheim/Garbenteich
Tel. +49 (0) 06404-9194-0 · Fax +49 (0) 06404-9194-91
info@fsm-umwelt.de · www.fsm-umwelt.de

FSM Multi Rake Bar Screen



The FSM - Multi Rake Bar Screen was developed to deal with particular problems associated with sewage pre-treatment plant.

Parallel to the increasing demands of users, FSM introduced modifications to the basic design. These have resulted in an optimum product for the preliminary treatment of waste water-providing high performance coupled with low operating costs.

Functional principle:

The waste water flows through bars made of stainless steel, while contaminants are held back. Solid matter is picked up directly at the bottom of the channel without the need for a base step. The cleaning elements are fixed between two chains and are designed with teeth for the best cleaning of the screen. The screenings can be discharged into containers, wash compactors, screw conveyors, conveyor belts etc. Sealing at the sides prevents solids from circumventing the filter. As an option we can deliver a flexible rake.

Features:

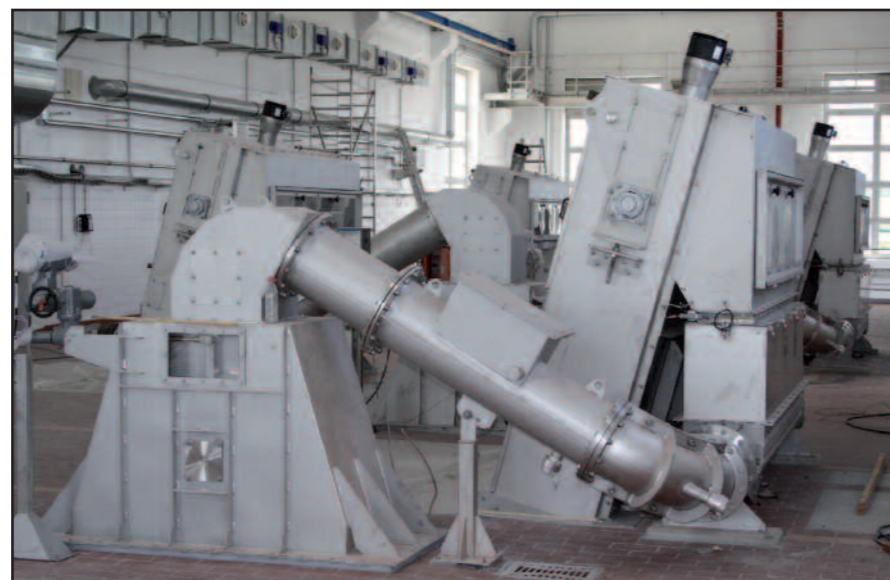
- High reliability through robust construction – no need for upstream coarse screening.
- The Multi Rake Bar Screen allows the passage of grit without malfunctioning.
- Discharge of grease in large quantities presents no problem.
- Filter elements optimally cleaned as result of their teeth.
- Screenings conveyed positively to the discharge point.
- Excellent cost/performance ratio



- Low maintenance costs
- Suitable for outdoor sites / operation in winter
- Easily adapted to suit changed operating conditions
- Machine completely hygienically encapsulated

Applications in municipal and industrial clarification plant

- waste water pre-treatment / fine screening
- sludge screening / secondary sludge
- sludge screening / primary sludge
- sea water treatment
- rainwater tank overflow and storage channel screening
- fecal matter reception and treatment



Applications in the paper and cellulose industry

- wash water, unbarking installations
- coarse matter runoff, channel water

Applications in power stations

- cooling and service water screening (river intake etc.)
- sea water screening

Industrial applications

- cooling and waste water screening (river intake etc.)
- sea water screening
- textile and textile finishing industry – preliminary clarification of total waste water
- meat, fish and poultry processing / slaughter-houses – preliminary clarification of total waste water
- sugar industry - preliminary clarification of total waste water
- composting installations, waste product and disposal engineering, seepage water treatment
- fruit and vegetable processing – preliminary clarification of total waste water
- breweries – preliminary clarification of total waste water
- animal meal production- preliminary clarification of total waste water
- removal of algae

Dimensions:

filter width	300 to 6000 mm
shaft center distance	up to 25000 mm, larger sizes on request
slot opening	2 – 100 mm, other sizes on request
water level difference	up to 2000 mm possible, larger differentials on request
mounting angle	90°, 85° or 75° other angles on request

Material/makes:

machine frame	stainless steel 1.4301 or 1.4571
filter element	stainless steel 1.4301 or 1.4571
chains	bush conveyor chain of wear resistant steel or wear resistant stainless steel
chainwheels	wear resistant steel or wear resistant stainless steel
drives	worm geared motors, make SEW
use with sea / brackish water	sea water resistant material for machine frame, filter elements, chains, chainwheels